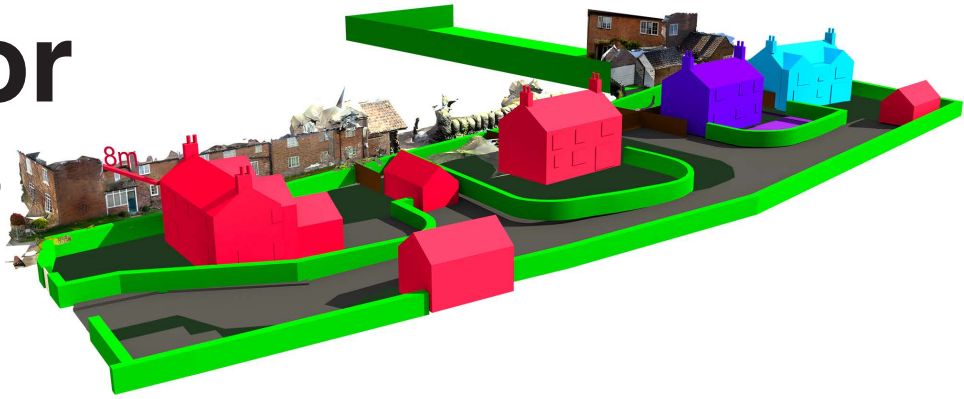


FOUR IS STILL TOO MANY !

Planning app' : 20/00619/FUL

Deadline for Comments Oct' 5th



The plans for The Orchard are now for four 2-storey houses.

4 houses is still over-development on this site

Plot 1 is just 8.5 metres from Burnetts.

Plots 2, 3 and 4 face directly onto the Lane.

The material objections that have been raised have not been addressed:

Sustainability

Hickling is not classified as a sustainable village due to the lack of services and this development now includes 12 car parking spaces, which is evidence of the need for private transport, which will increase congestion in the village.

Impact on a Conservation area

To bring a modern 'suburban' development into a semi-rural setting will negatively impact the Conservation area, and lead to a loss of open green space. The row of modern houses running up Long Lane on the northern boundary will end that tranquil, idyllic feel of the Lane. There is nothing stopping future owners removing the hedge that currently affords privacy.

Flooding

Poor evaluation with little real evidence for what impact new houses and global warming will have on what is, and has been, a significant problem around Long Lane, Main Street and Harles Acres.

Amenity

Properties on all sides of this development will be impacted by loss of amenity, through increased noise, loss of privacy, light pollution and increased traffic.

If you still oppose this development, please submit further comments or state that the objections you raised in your previous comments still stand.

Comments in writing should be sent to:

Gregory Sharman, Planning Officer, Rushcliffe Borough Council, Rushcliffe Arena,
Rugby Road, West Bridgford, Nottingham NG2 7YG

<https://planningon-line.rushcliffe.gov.uk/online-applications/>